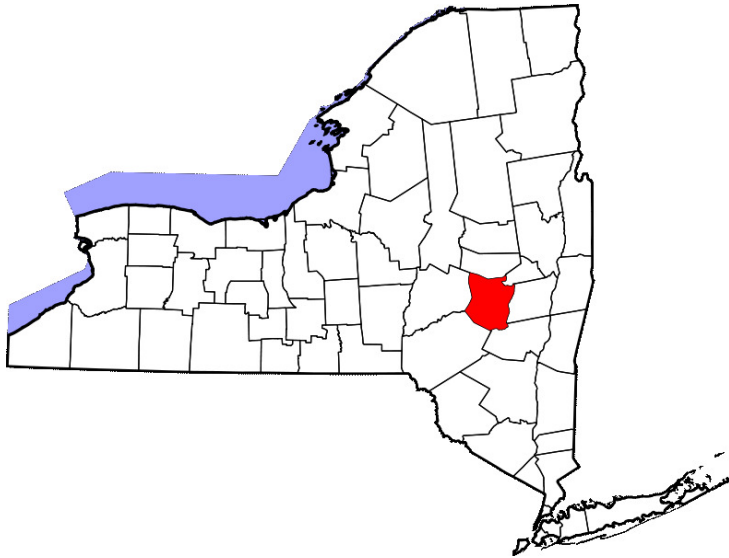


SCHOHARIE COUNTY CHAMBER OF COMMERCE

WELCOME TO SCHOHARIE COUNTY

Picture Perfect, All Year Long



**SCHOHARIE COUNTY
CHAMBER OF COMMERCE**

335 Main Street
PO Box 966
Middleburgh, NY 12122

Phone: 518-827-3900
Fax: 518-827-7453
Email: info@schohariechamber.com
www.schohariechamber.com

A Great Place to Live

- Employment
- Education
- Government
- Housing
- Tax Information



Welcome to

SCHOHARIE COUNTY

Thank you for your interest in Schoharie County and requesting information about our picturesque area!

The following is information we feel will be helpful to you as you consider relocating to our community. For more information, visit the Chamber web site at www.schohariechamber.com.

Sincerely,

Georgia Van Dyke

Georgia Van Dyke
Volunteer Interim Executive Director



SCHOHARIE COUNTY CHAMBER
OF COMMERCE

LENDING INSTITUTIONS

First New York Federal Credit Union

795 East Main Street
Cobleskill, NY 12043
518-234-2583
www.fnyfcu.com

Farm Credit East, ACA

Cross Roads Barn
2668 State Route 7, Suite 21
Cobleskill, NY 12043
518-296-8188
www.firstpioneer.com

Key Bank of New York

117 Veterans Drive
Cobleskill, NY 12043
518-234-3511
www.key.com

Legacy Bank

4507 State Route 30
Middleburgh, NY 12122
518-827-7888

NBT Bank of Cobleskill

691 East Main Street
Cobleskill, NY 12043
518-234-4331
www.nbtbank.com

NBT Bank of Middleburgh

229 Main Street, PO Box 231
Middleburgh, NY 12122
518-827-4111
www.nbtbank.com

NBT Bank of Schoharie

271 Main Street
PO Box 650
518-295-7788
www.nbtbank.com

NBT Bank of Sharon Springs

105 Main Street, PO Box 387
Sharon Springs, NY 13459
518-284-2231
www.nbtbank.com

Community Bank

754 East Main Street, Ste. 1
Cobleskill, NY 12043
518-234-2535
www.communitybank.com



REALTORS

Catskills “By Owner” LLC

PO Box 318
Bloomingdale, NY 12913
518-891-9919

Century 21 Rural Estates

323 Main Street
Schoharie, NY 12157
518-295-8547
www.century21ruralestates.com

Four Star Realty Group

332 Main Street, PO Box 309
Middleburgh, NY 12122
518-702-4194
www.fourstarrealtygroup.com

Realty USA

2668 State Route 7, Suite 40
Cobleskill, NY 12043
518-296-8300
www.realtyusa.com

Consultations

ASKUS Consulting Services LLC

PO Box 225
Middleburgh, NY 12122
518-827-4852
www.askusconsultingservices.com

Home Inspections/Mark Lassonde

6348 French’s Hollow Rd.
Altamont, NY 12009
518-469-6000

Multiple Listing Website

www.timesunion.com/crms/
Click through to *Schoharie County*



TABLE OF CONTENTS

Demographics	4
Government	5
Colleges/Universities	5
Places of Worship	6
Community Services	6
Newspapers	7
Library	7
Medical Care	8
Service Clubs/Organizations	8
Housing/Utilities	9
Taxes & Licenses	10
Recreation	11
Shopping	11
Economy & Employment	12
Education	13
Transportation	13
Schoharie County Schools	15
Law Enforcement Agencies	16
History	17
Realtors	18
Lending Institutions	19



DEMOGRAPHICS

POPULATION 31,529 (2009 Census: www.census.gov.
Click on State & County QuickFacts, select New York, and
select a county: Schoharie)

AREA CODE 518 AND 607

LOCATION 42.5909N, 74.4393W

GEOGRAPHY

Schoharie County is located in the east-central part of New
York State, 30 minutes southwest of the Capital Region.

The Capital Region, comprised of Albany, Schenectady, Troy
and suburbs has a population base of approximately 800,000.
It is the center of N.Y.S. Government and crossroads of all
transportation systems serving the northeastern U.S. Route
7, Route 20 and I-88 that joins N.Y.S. Thruway, at Exit 25A
connect Schoharie County to the Capital Region. Westerly
routes include Route 7 and I-88 to Binghamton and Route 20
to Utica and Syracuse. The Adirondack Mountains to the
north and Catskill Mountains to the south are easily accessed
via Routes 10 and 30. Schoharie County is located approxi-
mately three hours from New York City.

The County is rural in nature with a strong agricultural and
tourism base. Topography consists of rolling hills and flat
lands covering approximately six hundred square miles. The
population is 31,582 and is concentrated predominantly in the
Villages of Cobleskill, Schoharie, Middleburgh, Sharon
Springs and Richmondville all in the northern half of the
County.

The County enjoys educational and cultural features as a re-
sult of the New York State University Agricultural and Techni-
cal College at Cobleskill that provides many varied and inter-
esting opportunities.

CLIMATE

Temperatures range from -20 degrees to 80 degrees F with
annual average of 43 degrees F. Precipitation averages ap-
proximately 36 inches of rainfall and 55 to 60 inches of snow-
fall.

HISTORY

In Schoharie County, History Comes To Life in 1712,
the first Europeans arrived in the Schoharie Valley of
New York. Palatine German refugees, believing they
had been granted lands here by Queen Anne, settled in
seven villages called "dorfs". Dutch American settlers
also migrated from nearby Schenectady, purchasing
land from the Indians. At first the two groups clashed.
But, by the late 1700s, they were living harmoniously.

<http://www.schohariechamber.com/history.asp>

[Www.SchoharieHistory.net](http://www.schohariehistory.net)

The name "Schoharie" is from a Mohawk Indian word
meaning "floating driftwood."



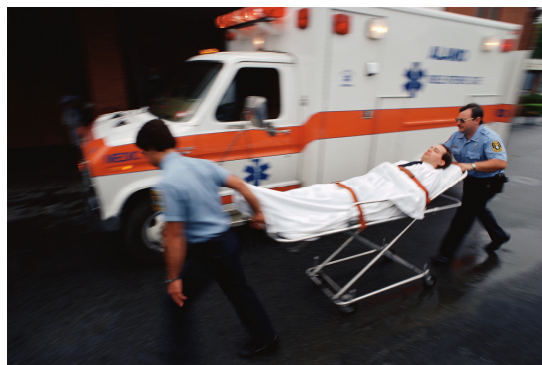


LAW ENFORCEMENT AGENCIES

Cobleskill Village Police	234-2111
Schoharie County Sheriff's Dept	295-8114
Schoharie Village Police	295-8114
State Police-NYS	
Cobleskill	234-3131
Middleburgh	827-5988
Schoharie	295-7202
US Marshal	1-315-732-2123
FBI	465-7551

EMERGENCY NUMBER DIAL 9-1-1

*For Immediate Response for Police, Fire, and
Ambulance*



GOVERNMENT

The County is made up of 16 townships governed by a Town Supervisor and Board of five to seven members for each of the Towns. Elections are held every 2-4 years. The County Seat is Schoharie. A Board of Supervisors made up of the 16 Town Supervisors governs the County. Their website address is www.schohariecounty-ny.gov

Writing or calling can obtain information about Town and County Government policies and procedures:

Board of Supervisors
284 Main Street
PO Box 429
Schoharie NY 12157
(518) 295-8421

<http://www.schohariecounty-ny.gov>

COLLEGES/UNIVERSITIES

State University of New York at Cobleskill (518) 234-5011
www.cobleskill.edu
State University of New York at Albany (518) 442-3300
www.albany.edu
State University of New York at Oneonta (607) 431-3500
www.oneonta.edu

BANKS (List page 19)

The county has several commercial banks, and savings and loan associations. To transfer credit information, ask your present banker for assistance, or contact a local bank of your choice.

New checking accounts may take ten working days to open. Most local stores will not cash out-of-town checks. New residents may initially need traveler's checks, cash and /or credit cards. ATM machines are located throughout the county.



PLACES OF WORSHIP

The county has approximately 20 churches of various denominations. Following is a partial listing of those denominations: Apostolic, Assemblies of God, Baptist, Christian & Missionary Alliance, Christian Science, Church of Jesus Christ of Later Day Saints, Episcopal, Full Gospel, Jehovah's Witnesses, Lutheran, Methodist, New Testament, Pilgrim Holiness, Presbyterian, Reformed Church in America Reformed Episcopal, and Roman Catholic.

Catskill Area Hospice, Inc
327 West Main Street, Ste 3
Cobleskill, NY 12043
(518) 234-7611

Center for the Disabled
4956 State Route 30
Schoharie NY 12157
(518) 295-7946

Cornell Cooperative Extension
173 South Grand Street
Cobleskill NY 12043
(518) 234-4303

Habitat for Humanity
PO Box 504
Cobleskill NY 12043
(518) 296-8677

Planned Parenthood Health
Services
560 Main Street
Cobleskill NY 12043
518) 234-3325

Schoharie Co. Chemical De-
pendency Clinic
113 Park Place, Suite 1
Schoharie, NY 12157
(518) 295-2031

Schoharie Co. ARC Council
State Rt. 30 (Opportunity Drive)
P.O. Box 307
Schoharie NY 12157
(518) 295-8130

Schoharie Co. Community Action
Program
795 East Main St., Ste 5
Cobleskill, NY
(518) 234-2568

Schoharie Co. Council of Sr. Citi-
zens
Office for the Aging
113 Park Place, Ste. 30
Schoharie, NY 12157
(518) 295-2001

Schoharie Co. Child Dev. Council
(Head Start)
PO Box 612
Cobleskill, NY 12043
(518) 234-7521



SCHOHARIE COUNTY CHAMBER
OF COMMERCE

SCHOHARIE COUNTY SCHOOLS

COBLESKILL-RICHMONDVILLE CENTRAL

www.crcs.k12.ny.us

GILBOA-CONESVILLE CENTRAL

www.gilboa-conesville.k12.ny.us

JEFFERSON CENTRAL

(607) 652-7821

MIDDLEBURGH CENTRAL

www.midtel.net/~mcs

SCHOHARIE CENTRAL

www.schoharieschools.com

SHARON SPRINGS CENTRAL

www.sharonsprings.org

VO-TECH

Board of Cooperative Education Services Area

Occupational Center

www.capregboces.org

NEW YORK STATE DEPARTMENT OF EDUCATION
www.nysed.gov (518) 474-3852

For Schoharie County School District Information –

www.emsc.nysed.gov/irts/c54_dist.html



BUS SERVICE

Locally, there is Greyhound/Vermont Transit Bus Service to Main Street in Cobleskill. For rates and schedule, please call Greyhound, 1--800-231-2222.

Commuter bus service to Capital District and local bus service -

Schoharie County Public Transportation: call (518) 234-0952 or (800) 551-2877.

TAXI

Coby Taxi (518) 231-8294 or Crabby Taxi (518) 231-7433 for service

AIR

Albany International Airport: with service to all major US cities, Colonie, New York 518-456-1926 (approximately 40 minutes from Schoharie County)



NEWSPAPERS

Times Journal (weekly)
19 Division Street P.O. Box 339
Cobleskill NY 12043 (518) 234-2515

My Shopper
(pennysaver-type weekly)
2403 State Rout 7, Suite 4
Cobleskill, NY 12043
(518) 234-8215
www.pennysaveronline.com

Daily Gazette Newspaper
2345 Maxon Road, P O Box 1090
Schenectady NY 12301 (518) 395-3022
www.dailygazette.com

Mountain Eagle (weekly)
364 Warren Street
Hudson, NY 12534
(607) 652-5252

LIBRARY

Schoharie County is part of the Mohawk Valley Library System. Please contact their website at www.mvls.info for any further information needed. To learn about the rich history of the Schoharie Valley, visit the Schoharie County GenWeb site at www.rootsweb.com/~nyschoha, or visit the Schoharie County Historical Society web site at www.SchoharieHistory.net.

Cobleskill Community Library, 110 Union Street, Cobleskill
234-7897
Schoharie Free Library, Knowler Ave., Schoharie, 295-7127
The Middleburgh Library, 332 Main Street, Middleburgh,
827-5142
Sharon Springs Free Library, Sharon Springs, 284-2625



MEDICAL CARE See phone directory for a complete list of physicians.

Cobleskill Regional Hospital:
offers a full service network with direct links to Mary Imogene Bassett Hospital in Cooperstown, a major medical center. (24-hour emerg. service)
178 Grandview Drive
Cobleskill NY 12043
(518) 254-3456 www.bhsc.org

Family Health Center
Grandview Drive
Cobleskill NY 12043
(518) 234-7000

Bassett Healthcare-Cobleskill
Legion Drive
Cobleskill NY 12043
(518) 234-2555

Sharon Health Center
State Rt 20
Sharon Springs NY 13459
(518) 284-2223

Bassett Health Care Schoharie
State Rt 30 and Barton Hill Road
Schoharie NY 12157
(518) 295-8521

ORGANIZATIONS

There are local chapters of Kiwanis, Rotary, Lions, Exchange, Knights of Columbus, and several others. Your present chapter can usually refer you to the local organization in our communities.



EDUCATION

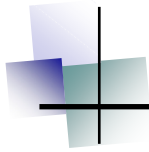
Elementary, Junior and Senior High School information may be obtained from the school office in the area you are interested in (list of schools and school statistics attached) or on the Internet from the NYS Dept. of Education at www.nysed.gov. For information regarding post secondary, continuing education, and Saturday College contact SUNY Cobleskill at (518) 255-5011.

TRANSPORTATION **HIGHWAYS**

Various state and national highways intersect Schoharie County. The northern half of the county is served by three east-west highways: Interstate 88, U.S. 20 and NYS Route 7. Eastward, these highways connect the area to Albany and Schenectady and Interstate 90 is part of the New York State Thruway System, which connects with points west to Buffalo; and becomes I-87 south to New York City. Heading west, U.S. 20, a scenic route, runs just south of the cities of Utica, Syracuse, and Rochester to Buffalo; Interstate 88 and State Route 7 lead to Oneonta, Binghamton, and south to Pennsylvania via Interstate 81. Completing the major highway system of the county are north south State Routes 10, 145, and 30. Routes 10 and 30 continue north to the Adirondack Mountains. Going south, Route 30 leads to the Catskill Mountains and Route 145 to I-87, the southern branch of the Thruway.

RAIL

Although the county does not have passenger service, CHX Railroad carries freight. The CHX virtually parallels I-88 and State Route 7, thus, Schoharie's access to the rest of the state and beyond is enhanced. Passenger Service is via AMTRAK with a station located in downtown Schenectady or Amsterdam. For information/reservations, call 1-800-872-7245.



ECONOMY AND EMPLOYMENT

The local economy is primarily based on agriculture, light manufacturing, banking, tourism, insurance, government, education and the wholesale, retail and service industries. For more information on business opportunities contact:

Schoharie County Planning,
Promotion and Development
Agency
276 Main Street, PO Box 396
Schoharie, NY 12157
(518) 295-8770

Schoharie County Chamber of
Commerce
335 Main Street, PO Box 966
Middleburgh, NY 12122
(518) 827-3900
www.schohariechamber.com

Schoharie County has six Empire Zones that offer tax benefits to businesses who are eligible in those locations.

For current information about employment opportunities in the area, contact:

Department of Labor
Mast Main Street
Cobleskill NY 12043

Private Industry Council
795 East Main Street
Cobleskill NY 12043
(518) 234-4254 x 2004

CULTURE

The area is an easy drive to historical Proctors Theater, Schenectady, Times Union Center, Albany; Saratoga Performing Arts Center, Saratoga; and many other Capital Region attractions. For local exhibits, performances and events contact:

Tri-County Arts Council
114 Lark Street
Cobleskill, NY 12043
(518)234-7521extension 209

HOUSING

Because the availability and cost of homes and apartments changes constantly, it is advisable to check the classified columns of the local newspapers, particularly the Times Journal, for current information. Or, contact the following for assistance:

Saratoga/Schenectady/Schoharie Association of Realtors
2254 Route 50, Suite 1
Saratoga Springs, NY 12866 518-885-4748

A list of local real estate agencies is on page 18.

UTILITIES

Water Private wells or Village; Check local phone directory for complete Water Dept. listings.

Gas Propane Gas, natural gas in some parts of Cobleskill
NYS Electric & Gas – 1-800-553-7056 (natural gas)

Electric National Grid 1-800-932-0301
Richmondville Power and Light (518) 294-6681,
294-7700
New York State Electric & Gas 1-800-553-7056

Phone Verizon
Residence (518) 890-6611
Business (518) 890-7711
Time Warner 966-448-9222
Middleburgh Telephone Co., Inc. (518) 827-5211

A Transwestern Schoharie County Telephone Directory can be picked up at the Chamber Office, 335 Main Street, Middleburgh or at H&R Block, 996 East Main Street, Cobleskill. Sorry, they cannot be mailed.



RECREATION

For information about area recreational programs and facilities, call the Village office in the Town you are interested in or contact:

Schoharie County Youth Bureau
113 Park Place, Suite 4
Schoharie, NY 12157
(518) 295-2057

CALENDAR OF EVENTS

For an up-to-date listing of community happenings contact the Schoharie County Planning, Promotion, & Economic Development Agency at 518-234-3751.

SHOPPING Retail Stores

A partial listing includes: Ace & True Value Hardware, Label Shopper, Fashion Bug, JC Penny Catalog Store, Rite Aid Drug, Scholet Furniture, Dollar General, Tractor Supply, and Wal-Mart Supercenter, plus many antiques & collectors shops, boutiques.

Grocers

Price Chopper, Grand Union and Wal-Mart Supercenter, plus many produce farms offering the season's best.

Major shopping malls in the Capital Region area (Albany, Schenectady, Troy) are 1/2 to 3/4 hours drive from Schoharie County.

Refuse

Private Collectors
MOSA (Solid Waste Authority) (518) 296-8884
Contact Village or Town

Cable

Time-Warner 1-800-638-2882
Mid-Tel Cable (518) 827-7777

Internet Access

MidTel Net * (518) 827-5211
Road Runner (800)-638-2882
**Through local exchanges*

TAXES

Property tax rates may fluctuate yearly and vary according to location of property. For information contact:

Real Property Tax Department
284 Main Street
Schoharie NY 12157
(518) 295-8332

[http://www.schohariecounty-ny.gov/CountyWebSite/
RealProperty/realpropertyhome.html](http://www.schohariecounty-ny.gov/CountyWebSite/RealProperty/realpropertyhome.html)

LICENSES

State auto registration and driver licenses may be obtained from:

Department of Motor Vehicles
284 Main Street
Schoharie NY 12157
(518) 295-8317

[http://www.schohariecounty-ny.gov/CountyWebSite/
CountyClerk/MVHome.html](http://www.schohariecounty-ny.gov/CountyWebSite/CountyClerk/MVHome.html)